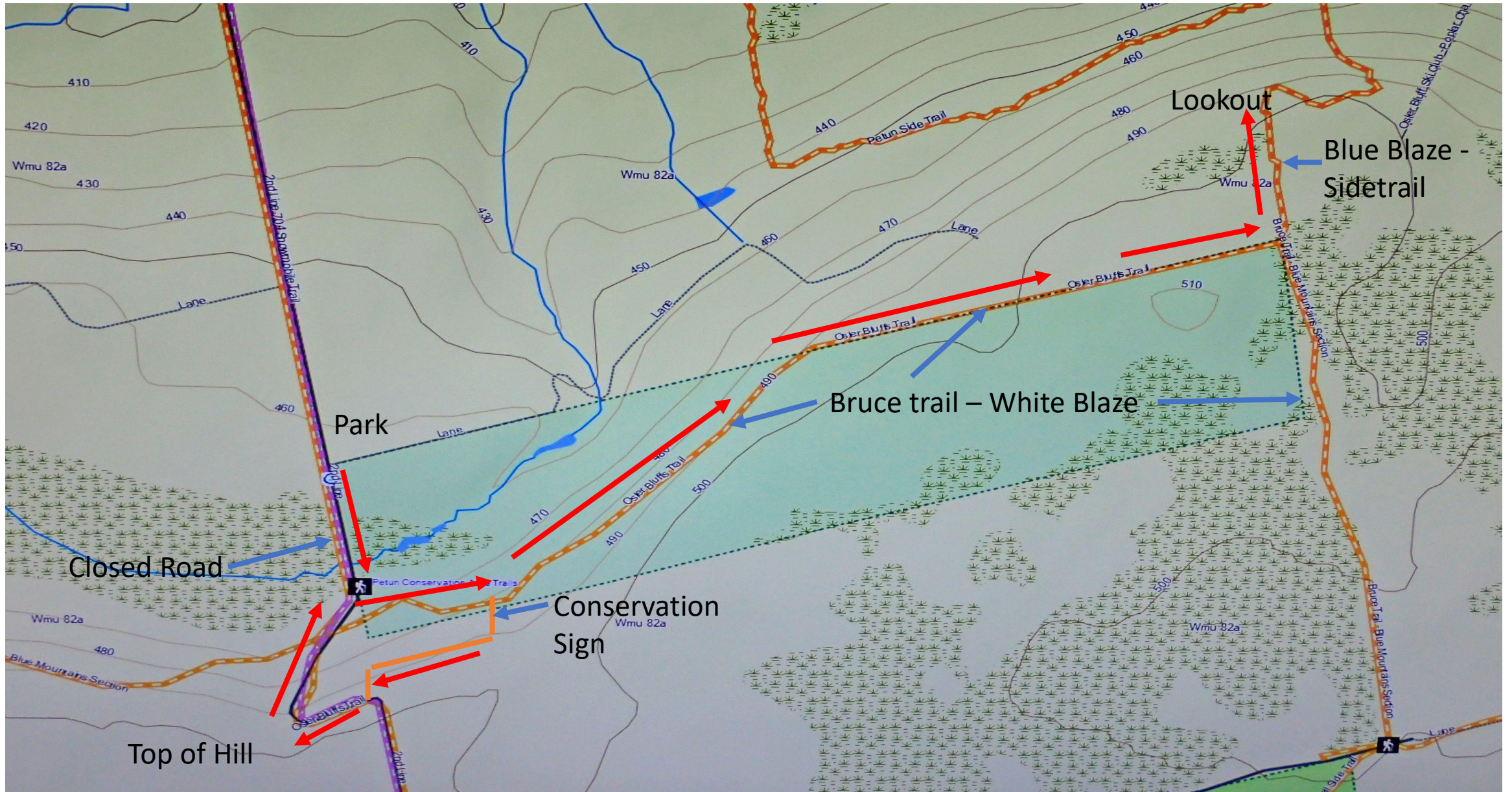


# Petun Conservation Area – 5 km Loop



## **Directions:**

Leave Collingwood going up the Mountain on Grey road 19. Almost at the top, turn left on Sideroad 2. Park at the end, where road is closed for winter. Park on one side of road, and leave the snowplow turnaround area empty.

## **Trail:**

The trail is an easy 5 km loop. As you start to climb the hill on the road, look carefully on your left for the Bruce trail (white blazes) that crosses the ditch. Enter the Bruce trail here. This section on the trail will take you into a very scenic forest with rock outcrops, and eventually lead you to the top of the ridge through a slot cave. The rest of the trail follows along the top of the ridge until you come to the Petun sidetrail (blue blazes). Take the sidetrail to the lookout. On the way back from the lookout, follow the trail back to the Petun Conservation Hut/Sign. Turn left just after the Petun Conservation Hut/Sign and follow the straight trail out to the closed road. Take the road down the hill and back to the parking.